

Order Details:

Order Number: _____ Order Date: _____

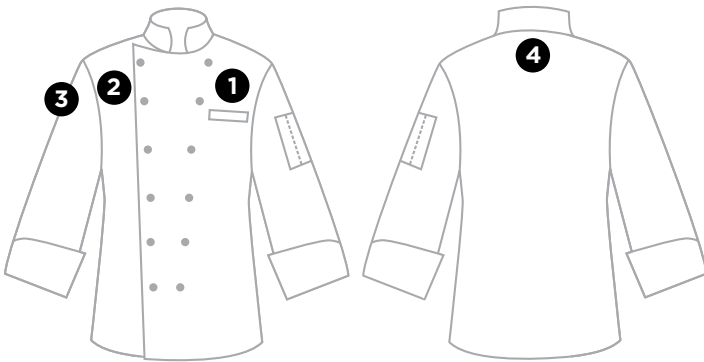
Contact Info:

Name: _____ Phone (include extension): _____

E-mail: _____ Fax: _____

Verify Placement

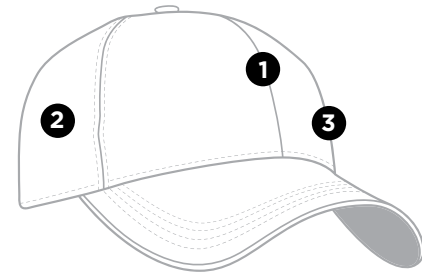
CHEF COATS



LOGO PLACEMENT

- #1 Left Side As Worn #3 Right Sleeve As Worn
 #2 Right Side As Worn #4 Center Back

HATS (BASEBALL CAP, BERETS & SKULL CAPS)



LOGO PLACEMENT

- #1 Center Front
 #2 Right Side As Worn
 #3 Left Side As Worn

All embroidery orders to include your logo, require a one-time only \$70 setup fee. We keep your logo on file so you can embroider additional products in the future with no additional setup fee. We require review of your digital art file in order to process the setup fee to ensure your logo can be embroidered or discuss options if we see any problems with reproduction of the artwork.

E-mail your digital logo file to info@highenduniforms.com.

Method of Payment: We will process your setup fee upon receipt and approval of your digital logo file. (Fee applies to first time orders only)

Credit Card. VISA MasterCard American Express Discover

Credit Card # _____ Exp. Date _____

Name of Cardholder (as it appears on card) _____ CSC# (security code)* _____

Billing Address for Card _____

City _____ State _____ Zip _____

EMBROIDERING YOUR LOGO

WHY IS THERE A SET UP FEE FOR FIRST TIME ORDERS? Digitizing is the process of converting your logo file into a digital code that can be read by our embroidery machine. The digital image file of your logo or emblem that you send us is a starting point, but digitizing involves telling the embroidery machine where to put each stitch, and what order to sew your design – including where to stop, trim the threads, and switch to a different color. You will be able to use that same sized logo in the future, on additional products with no set up fees.

CAN I SEE A SAMPLE FIRST? For all first time logo orders, the setup fee includes a “sew out” or stitched sample of your logo mailed to you prior to proceeding with the order. The logo will not be on the product, but on a fabric swatch. We will not proceed with the order until we receive approval that you are satisfied with the sew out. Or if you prefer, you have the choice to approve an electronic image of your sample sewout.

WHAT KIND OF FILE SHOULD I SEND? For the best reproduction of your logo, it’s important to send a quality logo file. The best, most flexible file type is a vector art file (created in Adobe Illustrator - a .AI or .EPS file). We can also accept high resolution (300 dpi) pixel based files like .JPG, .GIF, .PSD, .TIF or .BMP. If you’re unsure what to send, check with your graphic designer or send us the file to review – we can help determine whether the file will reproduce well for your custom embroidered item.

WHERE DO I SEND MY LOGO?

E-mail: info@highenduniforms.com Mail:
High End Uniforms
5442 Gateway Plaza Drive
Benicia, CA 94510